

# TURN OUT GEAR



*Every firefighter's turnout is*

a composite of three components  
– an outer shell,  
– a moisture barrier and  
– a thermal liner.

These components, as well as the entire composite and garment, when made of NOMEX® are certified to conform to NFPA, CGSB or EN standard and provide a complete protection system



DEFENDER ULTRA®



DEFENDER ULTRA®

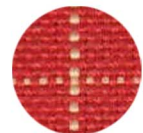
# TURN OUT GEAR

## Specification

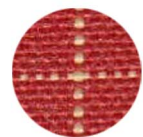
Layer 1: Outer Shell	Nomex® Advance Matrix (ADM) 7oz Kevlar® 60% + Nomex® 40% (with antistatic 2%) Kevlar® Filament Matrix ; 245g /m2 +- 5% ; EN469 & NFPA 1971
Layer 2: Moisture Barrier	Meta-aramid/viscose FR laminated to treated PTFE membrane matrix. 80-120 g/m2 +- 5% ; EN469 & NFPA 1971
Layer 3: Thermal Lining	Non woven Nomex®/Kevlar® x1 layer quilted to Nomex®/FR Viscose weaving Rip-Stop (50%50%) weight 170-210 g/m2 ; EN469 & NFPA 1971
Reflective Tapes	3M Scotchlite® fire coat trim lime yellow trim color certified EN 471/NFPA 19714 ANSI-ISEA107-2004
Thread	Nomex® thread, spun Nomex® thread, type 30/3 NFPA 1971, NFPA 1951, NFPA 1977, CAN/CGSB 155.22
Cuff	Nomex® Cuff, black diameter 3" ; NFPA 2112
Zipper	YKK® USA, Nomex® Tape Zipper #8 , Black; NFPA1975, NFPA2112, NFPA 1951
Velcro	Flame Retardant Velcro, Black width 2', BS5438-1976
Suspender	Type H Adjustment suspender heavy duty material
Reinforcement	Stafguard K®-Hypalon coated Kevlar®; NFPA 1971, NFPA 1951, NFPA 1977, CAN/CGSB 155.22
Standard size	S-M-L-XL
Made in	Indonesia - License Converter by DuPont USA



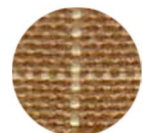
### Color



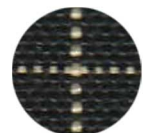
Orange



Red



Gold



Black

DuPont™  
**Nomex**®

DuPont™  
**Kevlar**®

**StedAIR**®  
MOISTURE BARRIERS  
BY STEDFAST

**3M**



# TURN OUT GEAR

## Infographic



### Material



Moisture Barrier



Thermal Barrier



Reinforcement



Reflective Tapes



Cuff



Zipper

1. Enclosure	YKK® FR zipper closing with FR Velco®
2. Reflective Trim	3M® Fire Coat Trim Lime Yellow
3. Cuff	Black Cuff NOMEX® FR
4. Collar	NOMEX® ADVANCE
5. Radio and Lining Pocket	NOMEX® ADVANCE
6 Knee Reinforcement	Staf Guard K Hypalon®

### Consist OF 3 layer

Outersheel ; NOMEX® ADVANCE MATRIX

Moisture Barrier; Meta-aramid/viscose FR laminated to treated PTFE membrane matrix.

80-120 g/m2 +- 5%

Thermal Linner; Nomex®/Kevlar® x1layer qualified to NOMEX®/FR Viscose



PT. Tri Sinergi Sejahtera

## PT. Tri Sinergi Sejahtera

Kantor Taman E.3.3 Unit D. 3A  
Jl. Dr. Ide Anak Agung Gde Agung  
Kawasan Mega Kuningan  
Jakarta Selatan - Indonesia

✉ [jhonny.sitanggang@3sinergi.com](mailto:jhonny.sitanggang@3sinergi.com)

☎ +62 812-1867-1983

